

COMUNE DI VERUCCHIO

VARIANTE AL PUA APNI 1° Stralcio
con contestuale attuazione
dell'Ambito di Riqualficazione AR 2

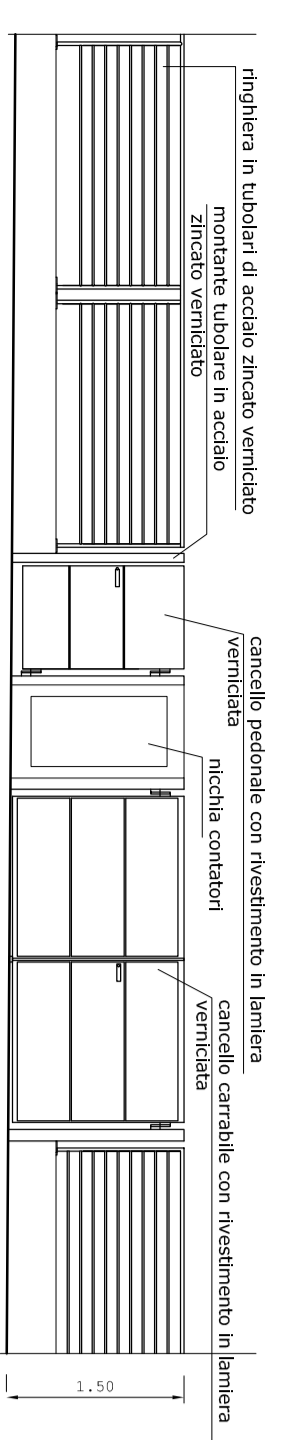
TIPOLOGIE EDILIZIE

Tav. 3.1
scala: 1:200
data: Dicembre 2021

Progettisti:
Arch. Menghi Valerio
Arch. Polanti Silverio
Geom. Boschetti Stefano

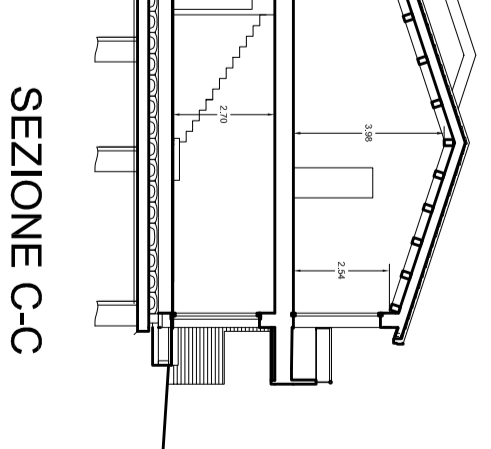
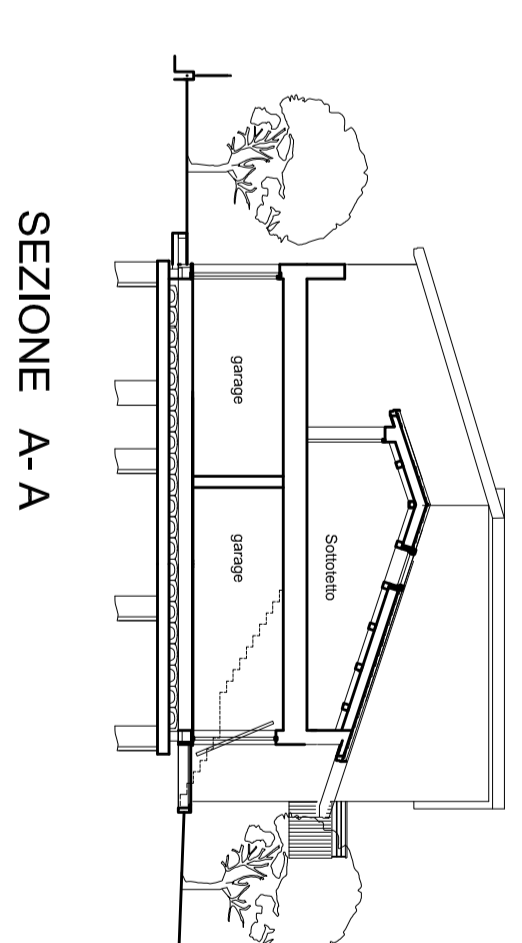
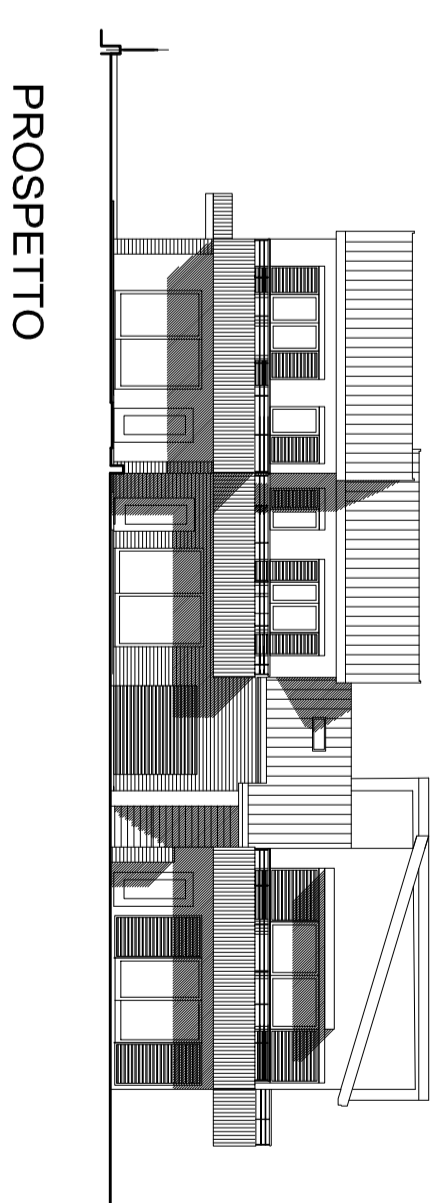
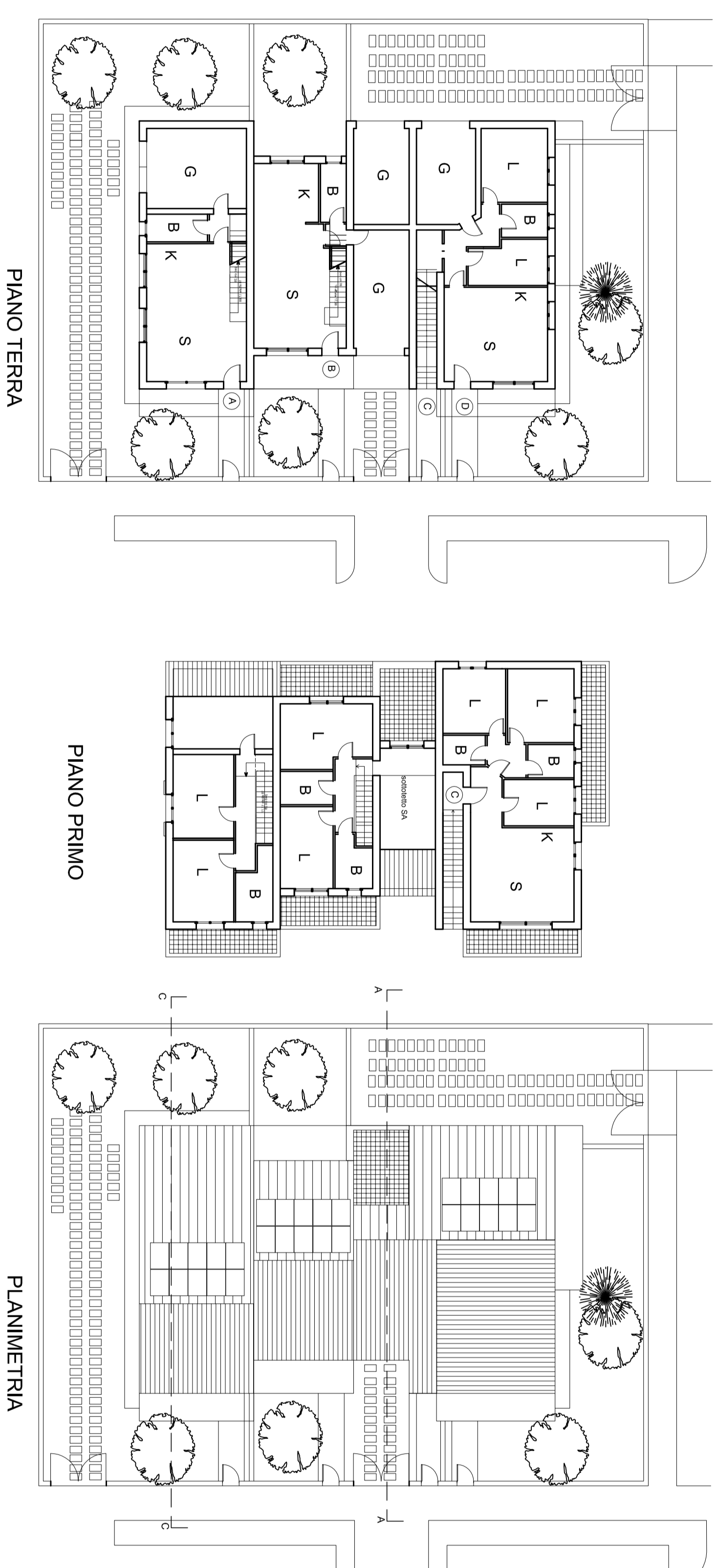
Para Brevetto, 3 47036 - Villa Verucchio
Tel/Fax 0541 679233 info@menghivalerio.it

La proprietà:
Celli Innocenzo
Celli Maria Grazia
Celli Rossana
Prof. Andrea
Prof. Alessandro
Azienda Agricola "Colle verde" s.a.s.

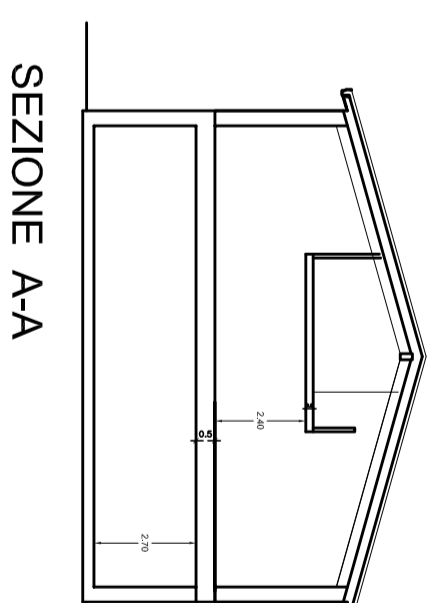
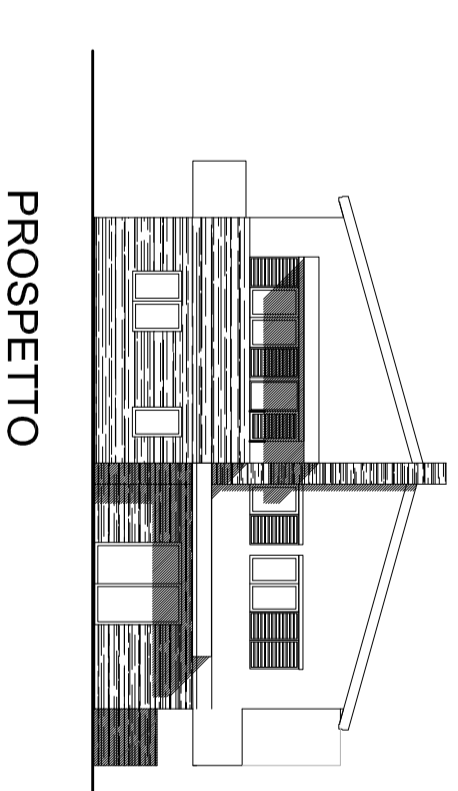
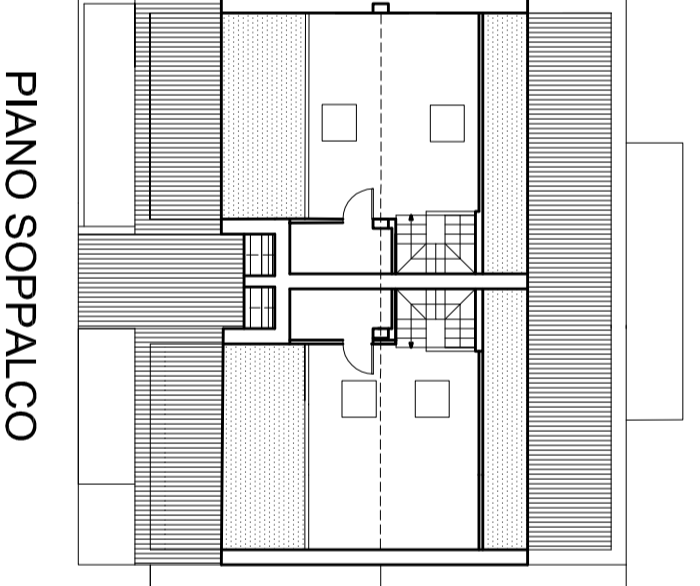
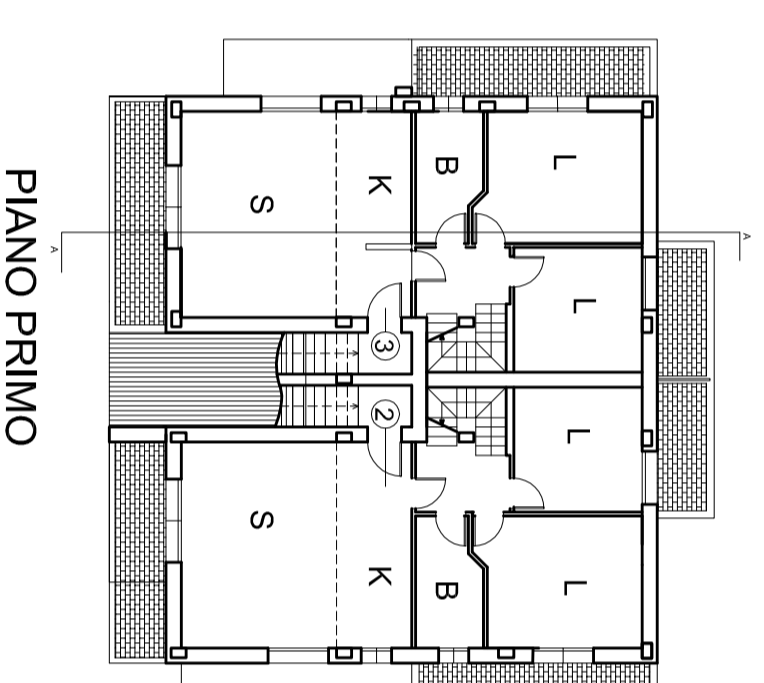
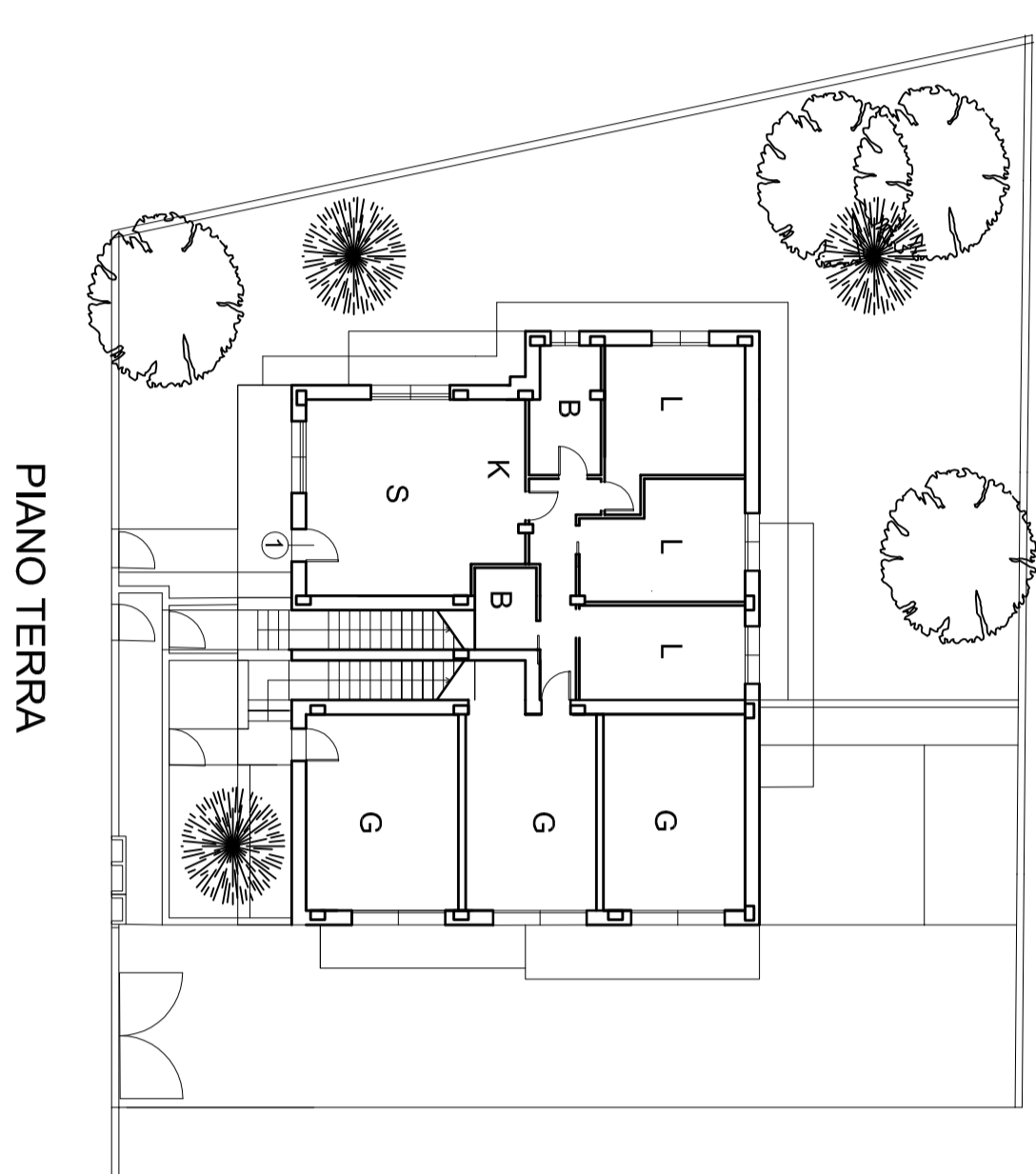


PARTICOLARE RECINZIONE SU STRADA

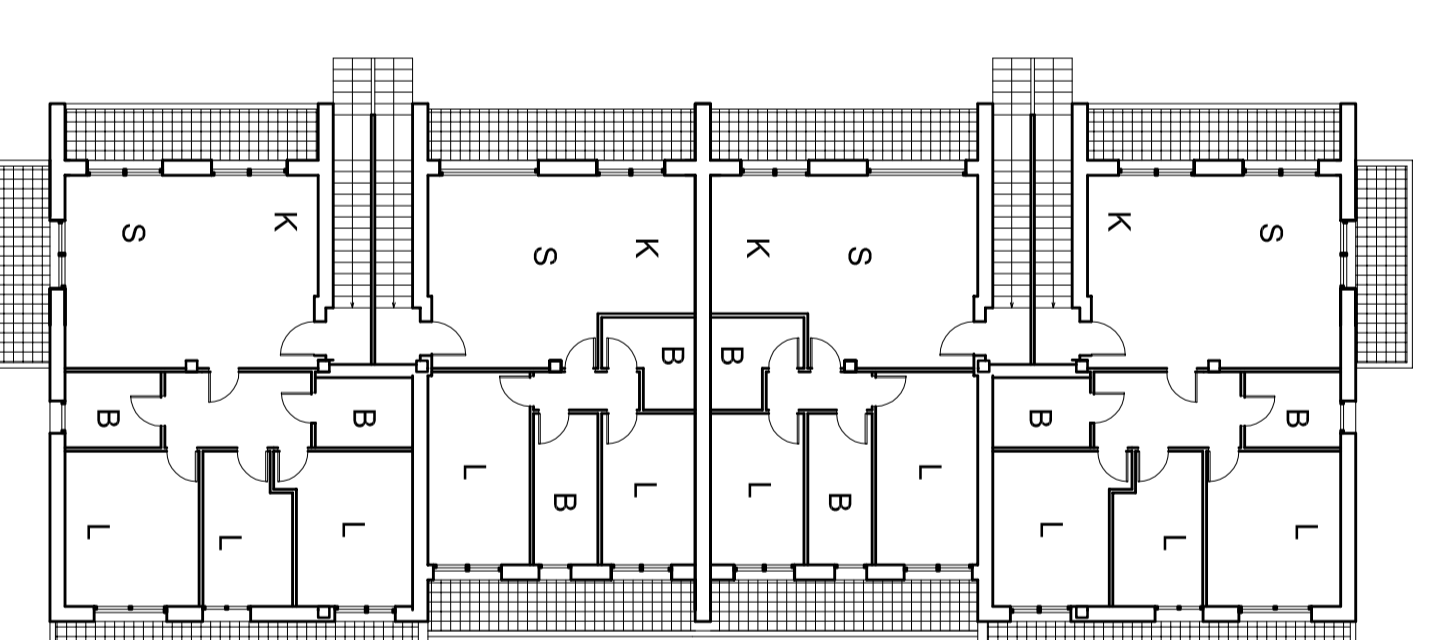
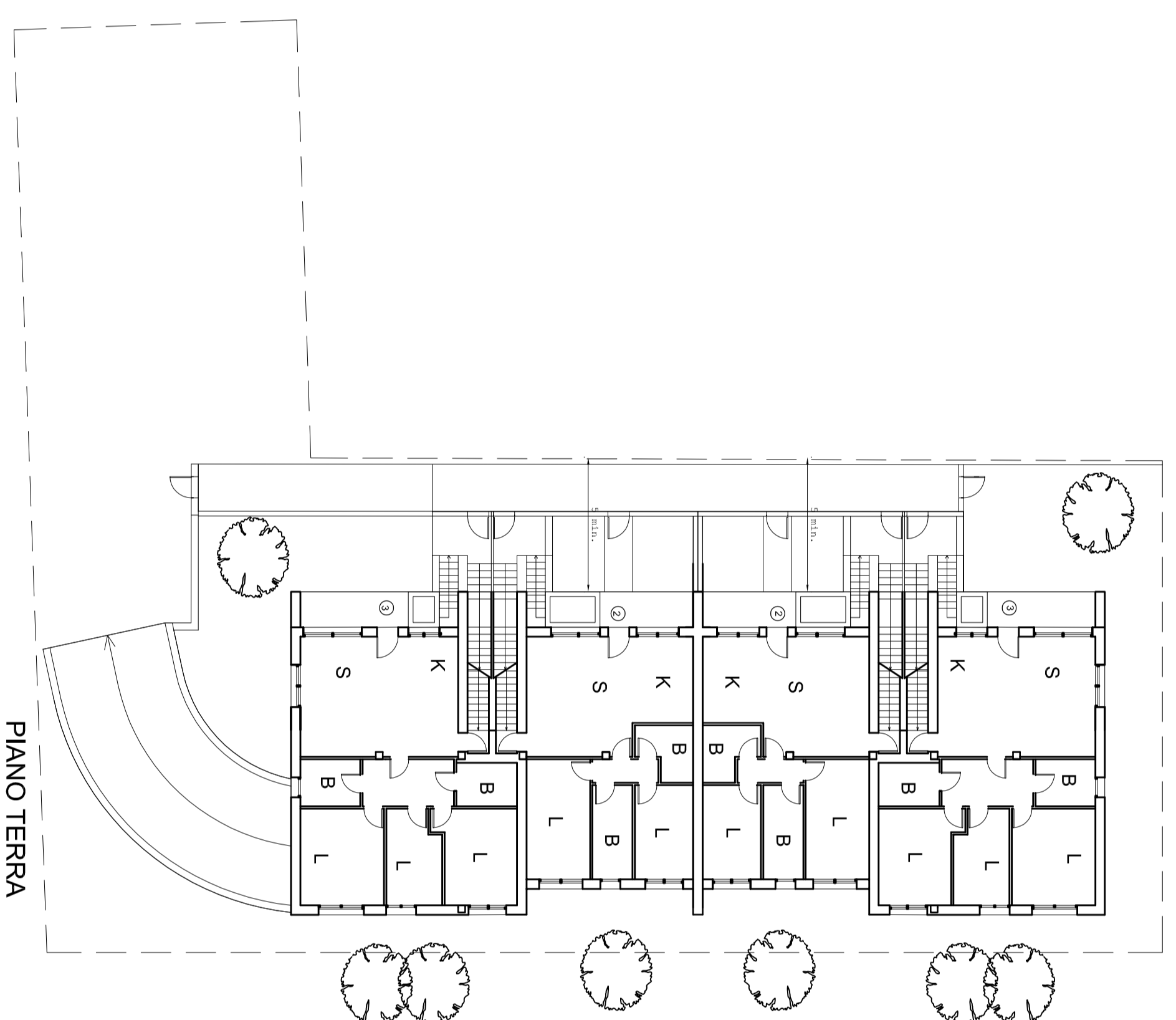
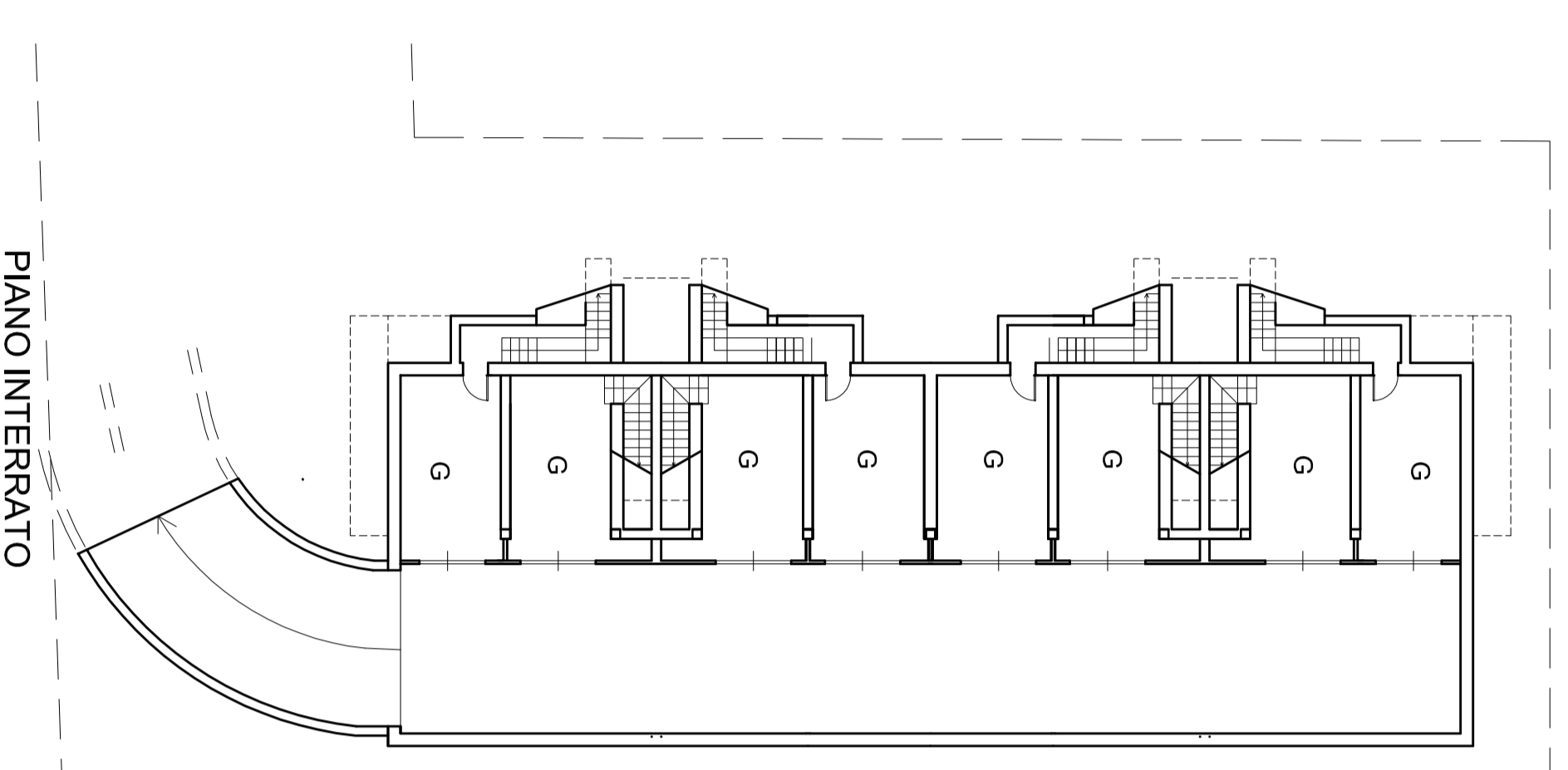
4
CASA
A SCHIERA
E APPARTAMENTI
A DUE PIANI
SENZA
INTERRATO
a 3/4 unità



5
CASA AD
APPARTAMENTI
A DUE PIANI
SENZA
INTERRATO
a 3/4 unità



6
ERS
APPARTAMENTI
IN LINEA
A DUE PIANI
CON AUTORIMESSA
INTERRATA
8 unità



PIANO PRIMO

COPERTURE

